

September 2025



NATIONAL
**SUICIDE
PREVENTION
MONTH**

CASA CHRONICLE

SEPTEMBER IS NATIONAL SUICIDE PREVENTION MONTH

“Suicide impacts entire communities. Each person who dies by suicide leaves behind loved ones, along with the impact of suicide and the bereavement that follows. Suicidal thoughts and attempts have many significant impacts on individuals and those around them.”**

As CASAs, we are part of a team that can help identify suicide risk factors and help implement protective factors for children in foster care.

To learn about Risk and Protective Factors of Suicide, go [HERE](#).

To learn about warning signs of suicide in both children and adults, go [HERE](#).

For tips on how to talk about Mental Health to your friends, family and CASA kiddo, go [HERE](#).

** [SAMHSA.gov/mental health](https://www.samhsa.gov/mental-health).



Payson CASA has a new spot for our Support Groups! You can check out our new CASA Meeting Room in the newly renovated courthouse at the next support group!



A DECADE OF ADVOCACY

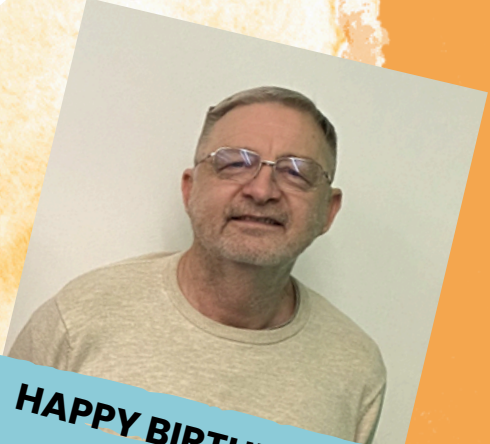


*Thank
you!*

JOANIE WILL BE DEARLY MISSED AS SHE EMBARKS ON THE NEXT CHAPTER OF HER LIFE. OVER THE YEARS, SHE HAS BEEN A DEDICATED ADVOCATE FOR 11 CHILDREN, INCLUDING TWO SEPARATE INSTANCES FOR ONE SIBLING GROUP. HER REMARKABLE ABILITY TO CONNECT WITH THE CHILDREN SHE HAS SERVED HAS EMPOWERED HER TO EFFECTIVELY CHAMPION FOR THEIR UNIQUE BEST INTERESTS.

HAPPY

BIRTHDAY



**HAPPY BIRTHDAY,
PEGGY!**

**HAPPY BIRTHDAY,
DUREN!**



**HAPPY BIRTHDAY,
ANITA, MARIAH, & EMILY!!**



We will miss you



Many of you have had the pleasure to meet or work with Anita, our CASA of Gila County Program Admin Support Staff. This month, we say good-bye! We are sad to see Anita leave our team but know that she's on to new amazing adventures. We wish you all the best, Anita!





1

When a volunteer leaves the CASA program, are they required to return their ID badge and all case-related materials to the CASA Coordinator?



2

GAL is an acronym for



3

True or False: A CASA is allowed to invite their appointed child over to their home for holidays and family gatherings.



4

True or False: Lack of access to behavioral health care is a risk factor for suicide.



5

In what section of the CASA Court Report will a CASA outline the events that brought a child into foster care?

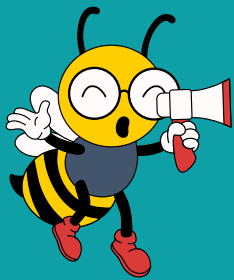


BONUS

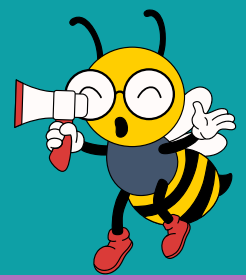
Name 3 of the 7 Cs that make up the essential building blocks of RESILIENCE.

- Yes
- Good Attorney Lady
- No
- Another Childhood Event
- Assessments
- Guardian Ad Litum
- False
- Brief History
- True
- Reasonable Efforts
- Plea
- General Attorney Liaison

CASAs, list your answers when you log your 30 minutes of training time (for reading the CASA Chronicle) on the Dashboard. Each correct answer will enter your name into a prize drawing to be held at the end of the year. Answers will be provided in next month's issue of the CASA Chronicle.



ANNOUNCEMENTS



Community Events

2nd Annual Veterans Resource Fair
 September 13, 2025
 10:00AM-2:00PM
 American Legion Post 4
 (645 S Broad St, Globe, AZ 85501)



Support Groups

Globe:

Wednesday, September 3, 2025
 4:00 PM
 Globe CASA Office or Zoom
 Contact Emily for Zoom link.

Payson:

Tuesday, September 8, 2025
 10:00 AM - 12:00 PM
 CASA Meeting Room or Zoom
 -- or --
 Wednesday, September 24, 2025
 12:00 PM - 2:00 PM
 CASA Meeting Room or Zoom
 Please contact Mariah for Zoom link.

Answers to August's CASA Trivia Match:

1. A disposition is a case plan.
2. ACE is an acronym for Adverse Childhood Experience.
3. Yes, a newly removed child in foster care does have the right to enroll in a new school immediately.
4. IEP is an acronym for Individualized Education Program.
5. True. An IEP is a legally mandated document under the Individuals with Disabilities Education Act.
6. BONUS: Fictive Kin are individuals who are not related to a child by blood or marriage but have a close, significant relationship with the child or their family, often acting as a trusted caregiver. These relationships can include family friends, neighbors, mentors, or godparents. Fictive kin can be a preferred option for out-of-home placement as it helps maintain the child's existing social network and potentially reduces the trauma associated with separation from their family.

Contact Us

Payson CASA Office
 Mariah Lantz
 CASA Coordinator
 928-474-7145
mlantz@courts.az.gov

CASA Admin. Support
 Anita Vannice
 928-474-7146
avannice@courts.az.gov

Globe CASA Office
 Emily Nader
 CASA Coordinator
 928-402-4427
enader@courts.az.gov